



1 BEDROOM 1 BATH 635 SF

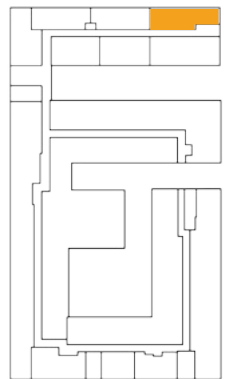
APT 607



\$ _____ \$ _____ \$ _____ \$ _____
MONTHLY RENT DEPOSIT PROCESSING FEE MOVE-IN TOTAL

NOTES _____

Square footage is calculated using the ANSI/BOMA Z65.4-2010 net method standard for home measurement. All plans, pricing, and specifications are subject to revisions deemed advisable by builder or architect, or required by law.



 E PLEASANT ST

