



2 BEDROOM 2 BATH 965 SF

APT 514



\$ _____
MONTHLY RENT

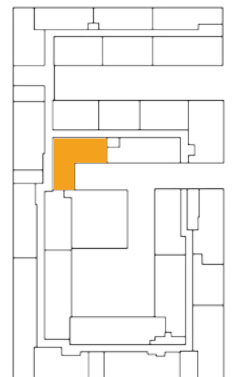
\$ _____
DEPOSIT

\$ _____
PROCESSING FEE

\$ _____
MOVE-IN TOTAL

NOTES _____

Square footage is calculated using the ANSI/BOMA Z65.4-2010 net method standard for home measurement. All plans, pricing, and specifications are subject to revisions deemed advisable by builder or architect, or required by law.



 E PLEASANT ST

